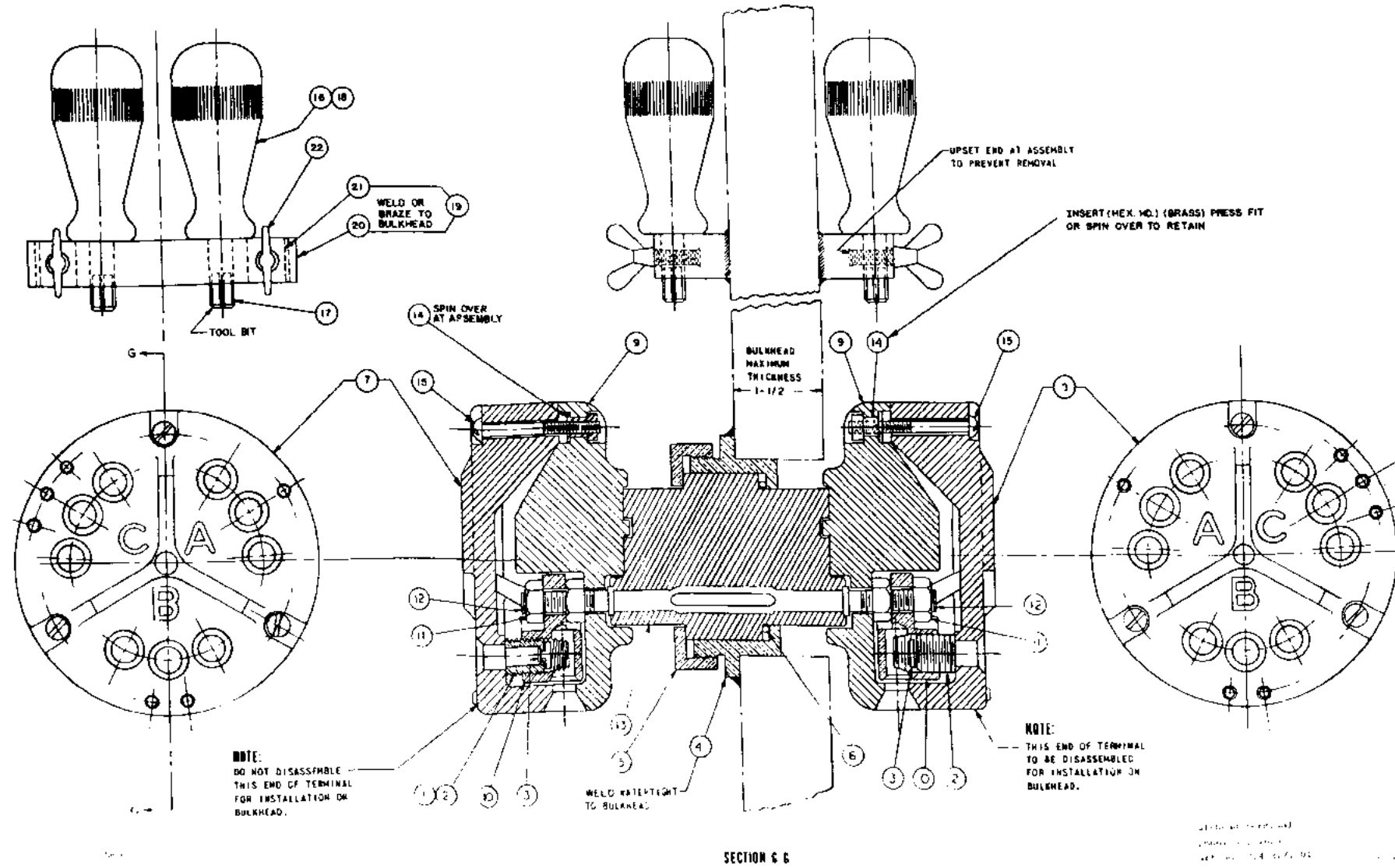


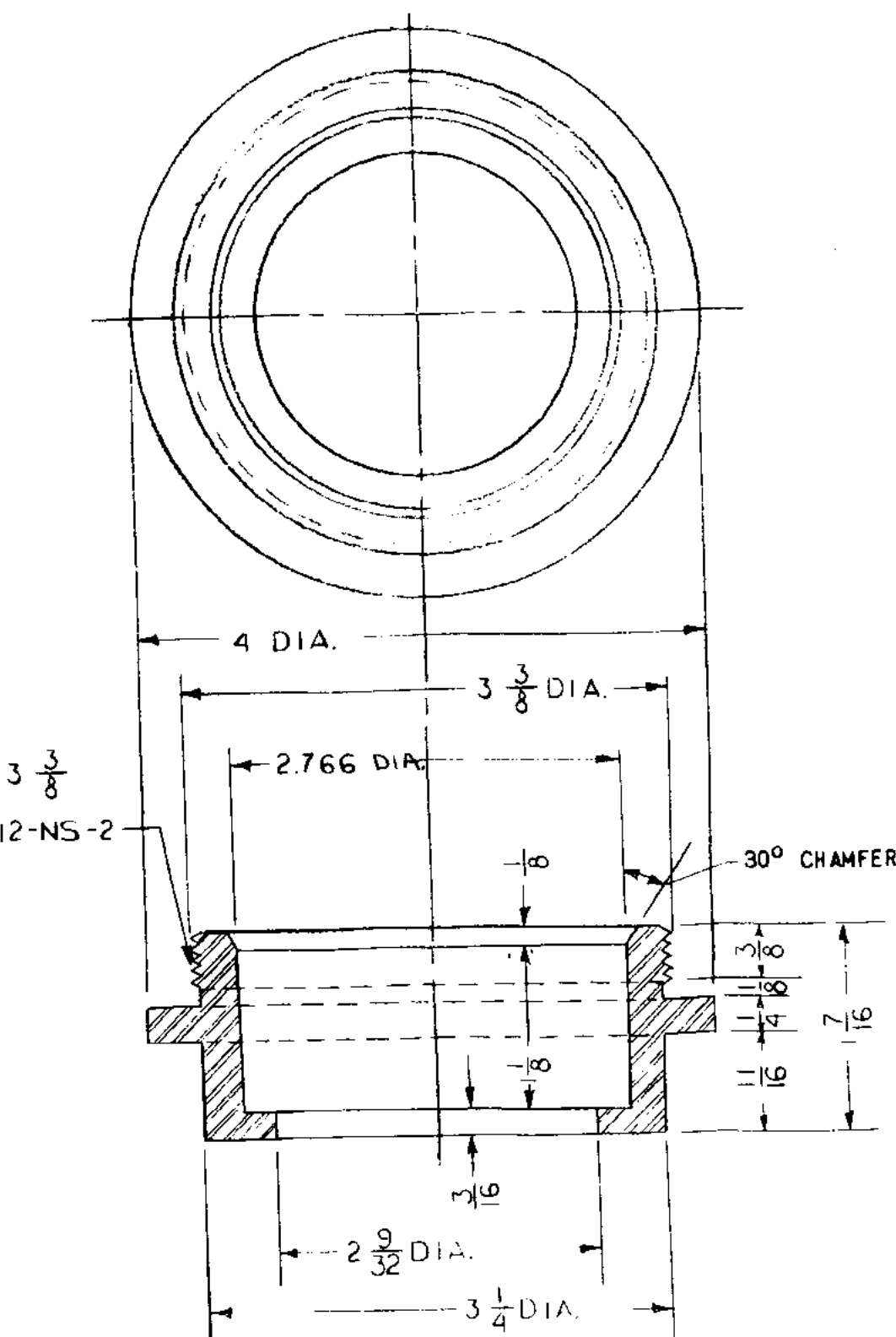
MILITARY SPECIFICATION SHEET
TERMINAL, CASUALTY POWER, BULKHEAD,
200-AMPERE, 500-VOLT, THREE-PHASE, ALTERNATING
CURRENT, SYMBOL NUMBER 1025

The complete requirements for procuring the terminal described herein shall consist of this document and the latest issue of Specification MIL-T-24381 (SHIPS).

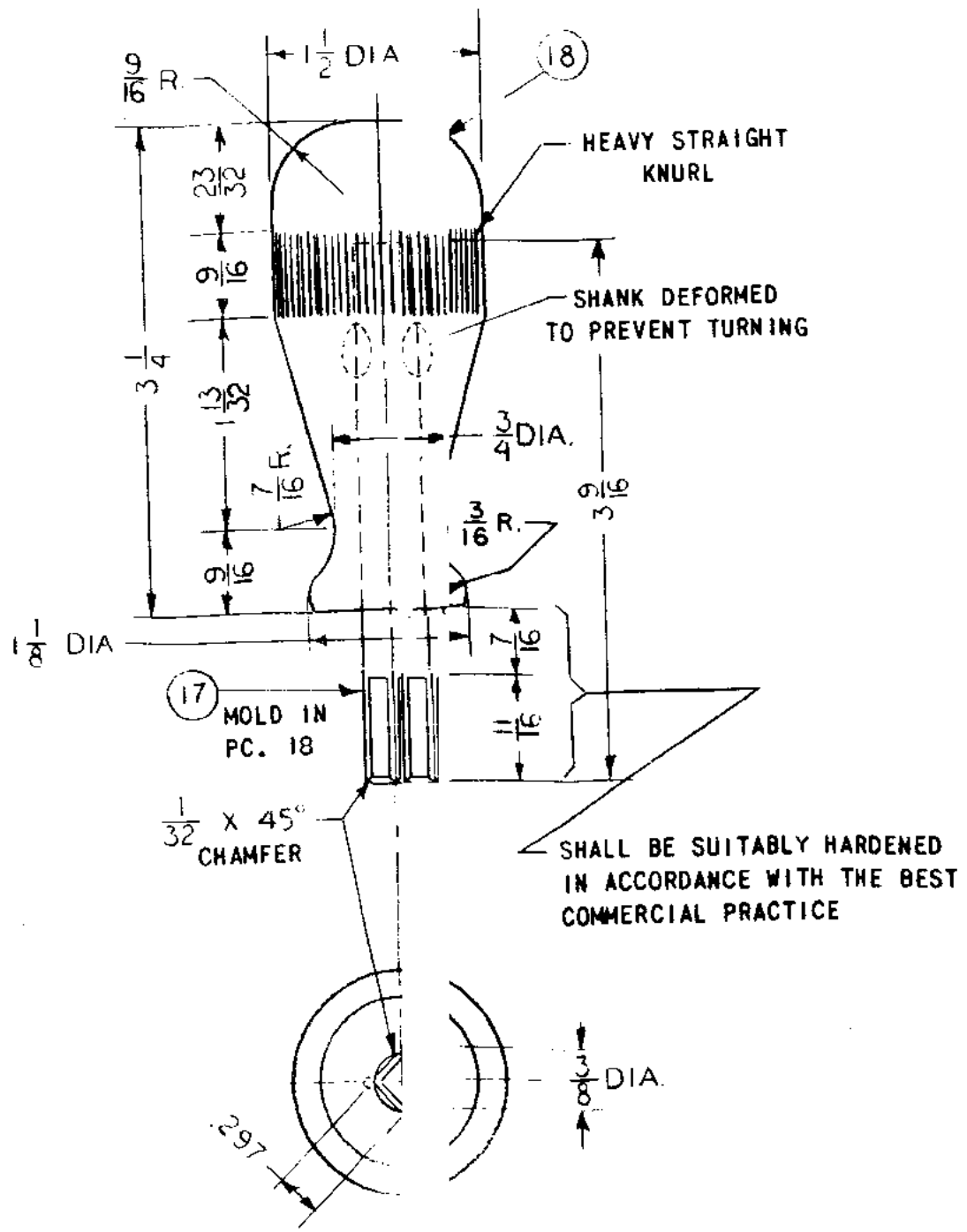


NOTE: Supersedes NAVSHIPS Drawing 9-S-5301-L.

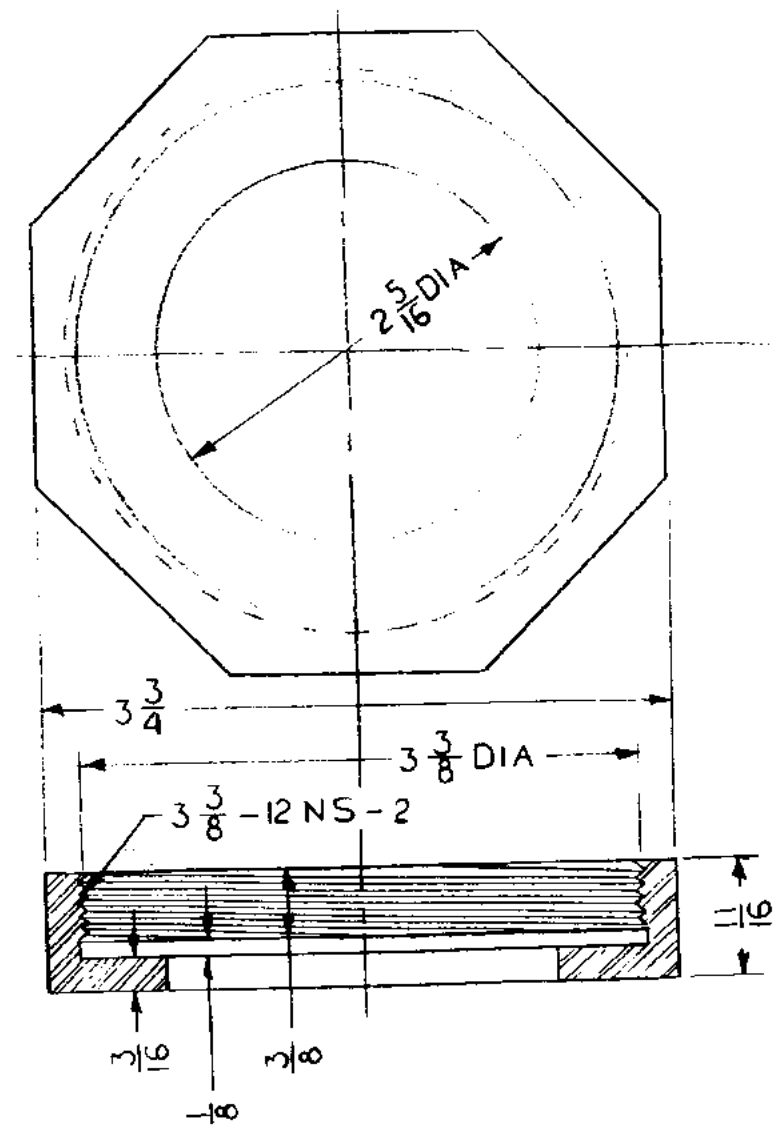
FSC 5940



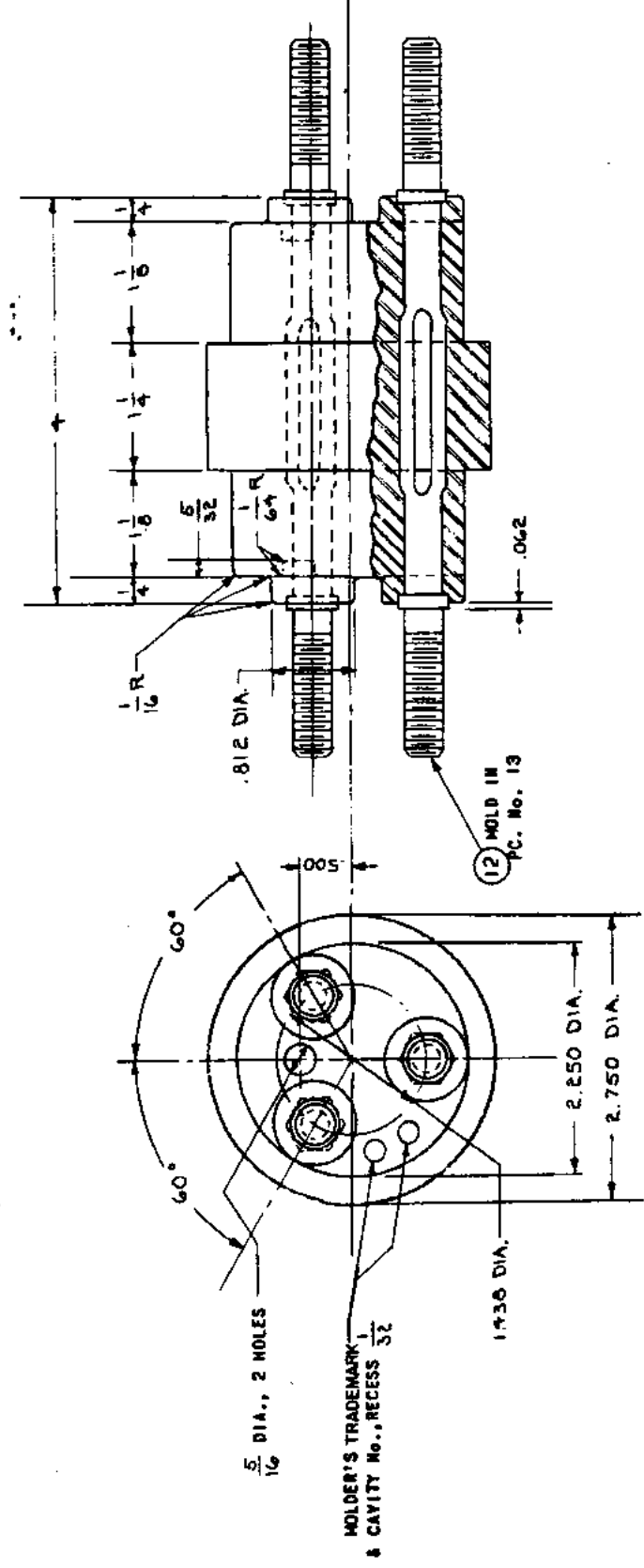
BULKHEAD GLAND, PIECE 4



TOOL HANDLE ASSEMBLY, PIECE 16

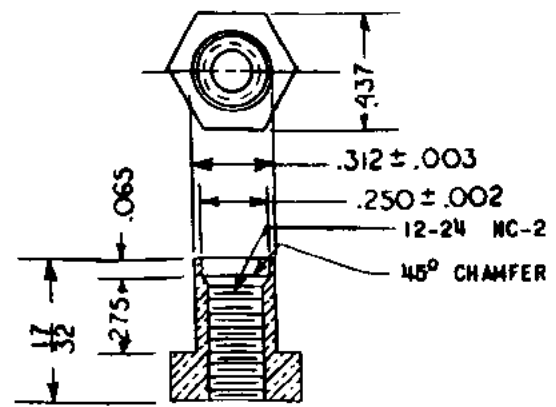


BULKHEAD GLAND NUT, PIECE 5

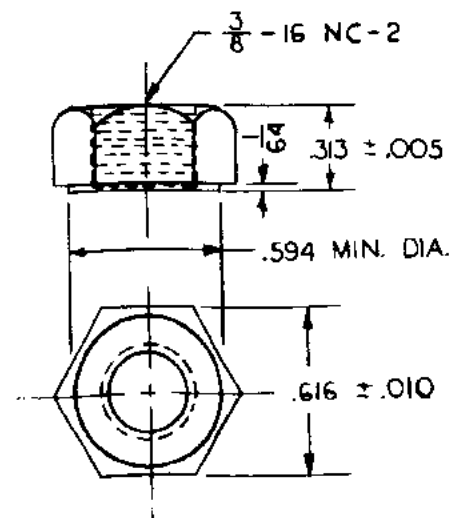


BODY, PIECE 13

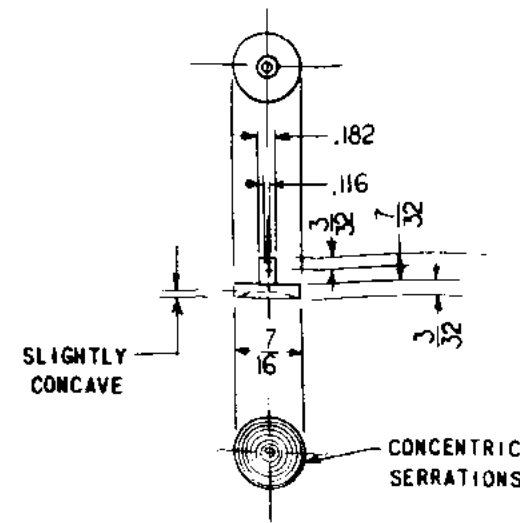
SR 10280



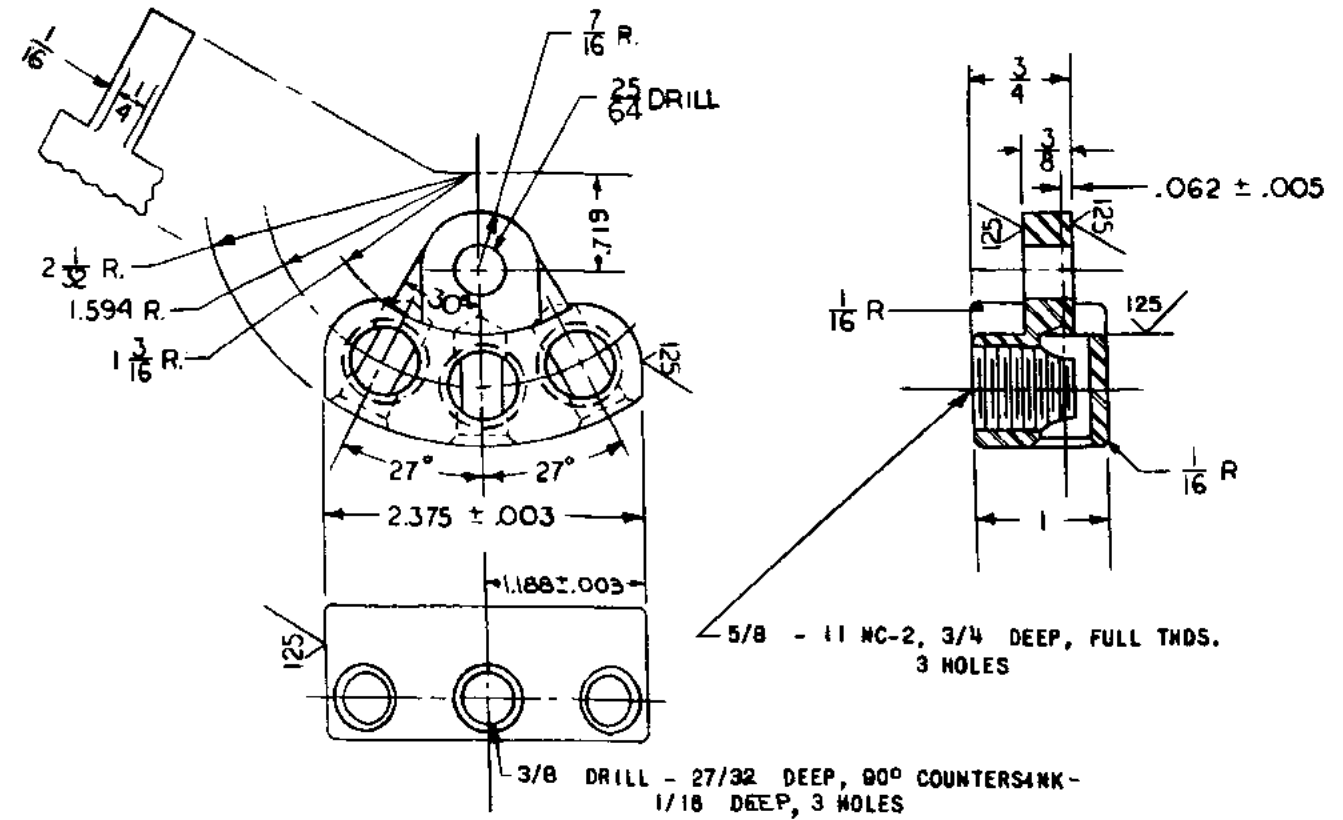
INSERT, PIECE 14



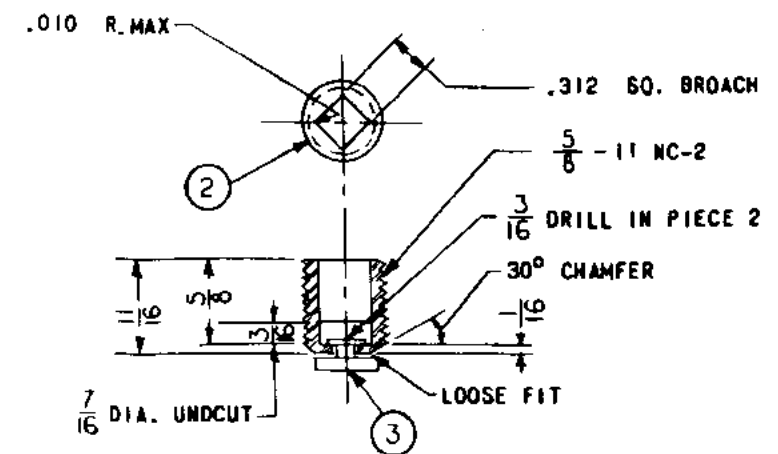
TERMINAL NUT, PIECE 11



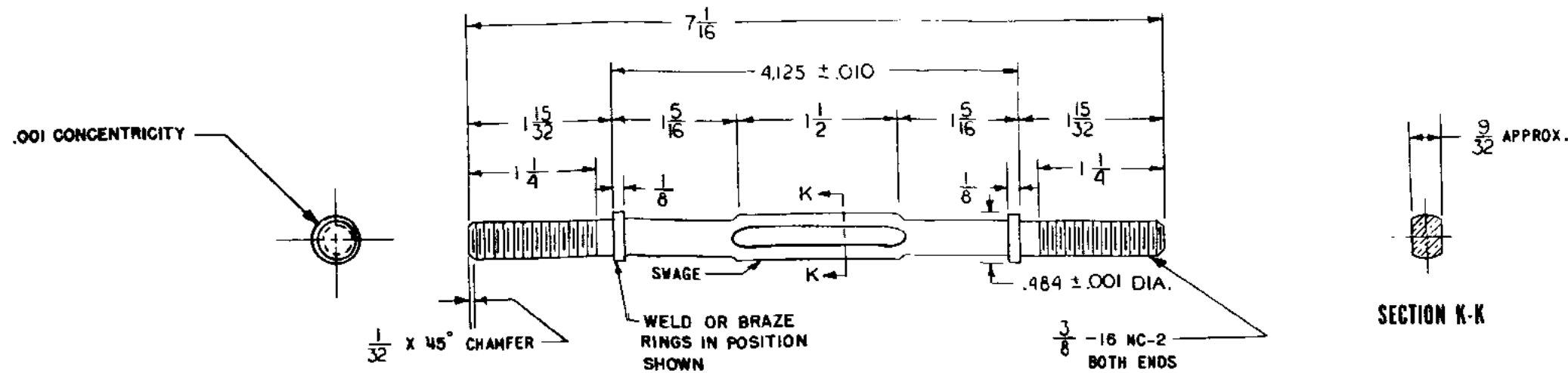
PRESSURE DISK, PIECE 3



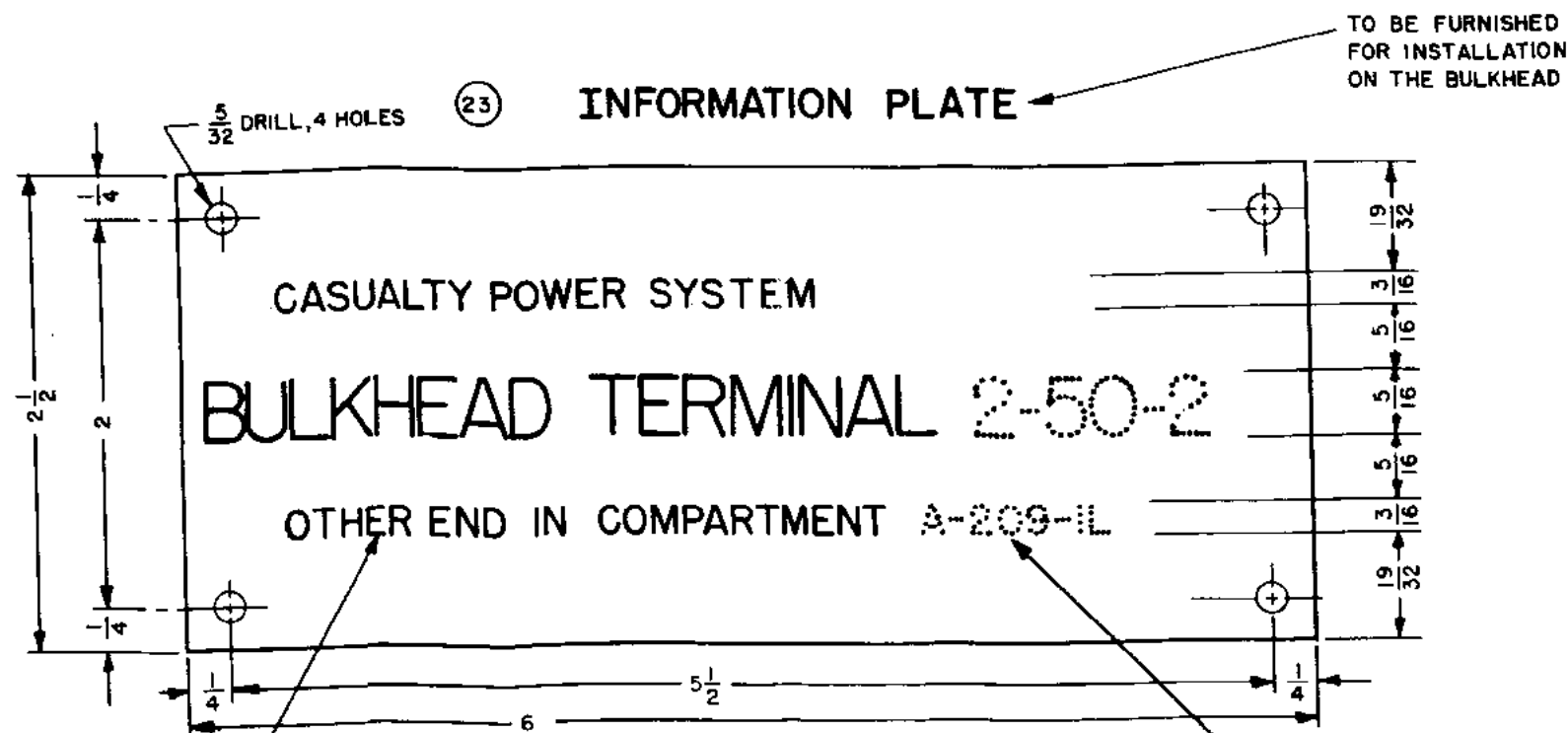
TERMINAL, PIECE 10



TERMINAL SCREW ASSEMBLY, PIECE 1



TERMINAL ROD, PIECE 12



TO BE FURNISHED FOR INSTALLATION ON THE BULKHEAD

WHEN THE OTHER END OF BULKHEAD TERMINAL IS INSTALLED OUTSIDE. ON A WEATHER DECK THIS LINE SHALL BE CHANGED TO:
OTHER END OUTSIDE, MAIN DECK FR. 51 STBD.

MARKING SHOWN IN DOTTED IS TYPICAL ONLY AND SHOULD INDICATE THE ACTUAL LOCATION IN THE SHIP.

801

8

List of material						
Quantities are for one a.c. bulkhead terminal						
Piece number	Name of piece	No. req'd.	Material	Material specifications	Finish	Remarks
1	Terminal screw assembly	18				
2	Terminal screw	18	Brass	Coml		
3	Pressure disk	18	Brass	Coml		
4	Bulkhead gland	1	Steel	Coml	Zinc	
5	Bulkhead gland nut	1	Steel	Coml	Zinc	
6	Bulkhead O-ring	1	Rubber	MIL-C-18586		Size No.33
7	Cover (left hand)	1	Molded plastic type MAI-60	MIL-M-14	Gray	1/
8	Cover (right hand)	1	Molded plastic type MAI-60	MIL-M-14	Gray	1/
9	Base	2	Molded plastic type MAI-60	MIL-M-14	Gray	1/
10	Terminal	6	Cast copper alloy Alloy B2	QQ-C-390		
11	Terminal nut special	12	Brass	Coml		
12	Terminal rod	3	Copper hard drawn	QQ-B-825		
13	Body	1	Molded plastic type MAI-60	MIL-M-14	Gray	1/
14	Insert	6	Brass	Coml		
15	#12-24 rh. hd. mach. screw 2-1/16"lg.	6	Brass	Coml		
16	Tool handle assembly	4				
17	Tool bit	4	Tool steel	Coml	Zinc	
18	Tool handle	4	Molded plastic type MAI-60	MIL-M-14	Gray	1/
19	Tool rack assembly	2				
20	Tool rack	2	Steel	Coml	Zinc	
21	Tool rack clamp	2	Steel	Coml	Zinc	
22	Wing screw	4	Steel	Coml	Zinc	
23	Information plate	1	Lam. phenolic	MIL-P-15037		

1/ Molded plastic type MMI-30 (natural) may be substituted for MAI-60 (gray).

All dimensions in inches
unless otherwise specified

Tolerances are:

Fractions + 1/64
Decimals ± .005
Angles ± 1/4° degree

REQUIREMENTS:

1. Dimensions and configuration: See figures.
2. Bulkhead terminal shall be designed for use with type THOF-42 of MIL-C-915/6.
3. Electrical rating: 200 amperes, 500 volts, three-phase, alternating current.
4. All projection and spot welding shall be performed by machines having automatic control of current, timing, and pressure to insure uniformity of operation.
5. Impact test required to determine strength of welded or brazed parts.
6. Water pressure test to determine watertightness of bond between terminal rod and body.
7. Cover for bulkhead terminal is covered by MIL-T-24381/10.
8. Part number: M24381/1-01.

Preparing activity:
Navy SH
(Project 5940-N556)