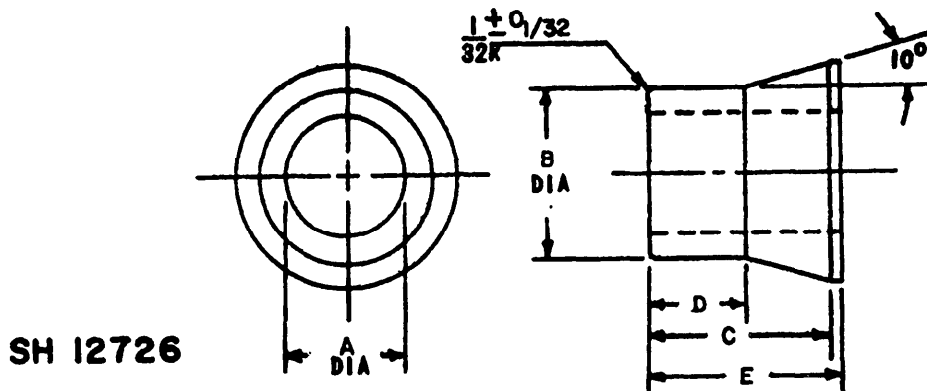


MILITARY SPECIFICATION SHEET

STUFFING TUBE, NYLON: BUSHING, NEOPRENE

This specification sheet is approved for use within the Naval Sea Systems Command and is available for use by all Departments and Agencies of the Department of Defense.

The requirements for acquiring the neoprene bushings described herein shall consist of this specification and the latest issue of MIL-S-19622.



(E) FIGURE 1. Dimensions and configuration.

(E) TABLE I. Size selection.

| (E) Tube size | Military part number | Dimensions ^{1/2/} | | | | | Superseded part number |
|---------------|----------------------|----------------------------|-------|-------|-------|-------|------------------------|
| | | A DIA | B DIA | C | D | E | |
| 1 | M19622/13-0001 | 0.187 | 0.562 | 0.687 | 0.343 | 0.750 | MS16174-102 |
| | -0002 | .127 | .562 | .687 | .343 | .750 | MS16174-102A |
| | -0003 | .150 | .562 | .687 | .343 | .750 | MS16174-102B |
| | -0004 | .234 | .562 | .687 | .343 | .750 | MS16174-103 |
| | -0005 | .278 | .562 | .687 | .343 | .750 | MS16174-103A |
| | -0006 | .296 | .562 | .687 | .343 | .750 | MS16174-104 |

See footnotes at end of table.

(E) denotes changes.

AMSC N/A

FSC 5975

DISTRIBUTION STATEMENT A Approved for public release; distribution unlimited

MIL-S-19622/13E(SH)

(E) TABLE I. Size selection. - Continued

| Tube size | Military part number | Dimensions ^{1/2/} | | | | | Superseded part number |
|---------------|----------------------|----------------------------|-------|-------|-------|-------|------------------------|
| | | A DIA | B DIA | C | D | E | |
| 2 | M19622/13-0007 | 0.325 | 0.627 | 0.750 | 0.343 | 0.813 | MS16174-105 |
| | -0008 | .367 | .627 | .750 | .343 | .813 | MS16174-106 |
| | -0009 | .390 | .627 | .750 | .343 | .813 | MS16174-107 |
| | -0010 | .425 | .627 | .750 | .343 | .813 | MS16174-108 |
| | 3/ -0054 | .472 | .627 | .750 | .343 | .813 | MS16174-109 |
| 3 | -0011 | .472 | .767 | .750 | .343 | .813 | MS16174-109A |
| 4 or 4T | -0012 | .500 | .908 | .750 | .343 | .813 | MS16172-110 |
| | -0013 | .547 | .908 | .750 | .343 | .813 | MS16174-111 |
| | -0014 | .584 | .908 | .750 | .343 | .813 | MS16174-112 |
| | -0015 | .609 | .908 | .750 | .343 | .813 | MS16174-113 |
| | -0016 | .665 | .908 | .750 | .343 | .813 | MS16174-114 |
| | -0017 | .700 | .908 | .750 | .343 | .813 | MS16174-114A |
| | -0018 | .719 | .908 | .750 | .343 | .813 | MS16174-115 |
| | 3/ -0053 | .777 | .908 | .750 | .343 | .813 | MS16174-116 |
| 5 | -0019 | .777 | 1.345 | 1.125 | .625 | 1.188 | MS16174-117A |
| | -0020 | .812 | 1.345 | 1.125 | .625 | 1.188 | MS16174-117 |
| | -0021 | .853 | 1.345 | 1.125 | .625 | 1.188 | MS16174-118 |
| | -0022 | .889 | 1.345 | 1.125 | .625 | 1.188 | MS16174-119 |
| | -0023 | .937 | 1.345 | 1.125 | .625 | 1.188 | MS16174-120 |
| | -0024 | .980 | 1.345 | 1.125 | .625 | 1.188 | MS16174-121 |
| | -0025 | 1.021 | 1.345 | 1.125 | .625 | 1.188 | MS16174-121A |
| | -0026 | 1.042 | 1.345 | 1.125 | .625 | 1.188 | MS16174-122 |
| | -0027 | 1.073 | 1.345 | 1.125 | .625 | 1.188 | MS16174-123 |
| | -0028 | 1.113 | 1.345 | 1.125 | .625 | 1.188 | MS16174-124 |
| | -0057 | 0.766 | 1.345 | 1.125 | .625 | 1.188 | --- |
| | -0058 | .806 | 1.752 | 1.375 | .687 | 1.438 | --- |
| 6 | -0055 | .886 | 1.752 | 1.375 | .687 | 1.438 | --- |
| | -0056 | .956 | 1.752 | 1.375 | .687 | 1.438 | --- |
| | -0029 | 1.159 | 1.752 | 1.375 | .687 | 1.438 | MS16174-125A |
| | -0030 | 1.167 | 1.752 | 1.375 | .687 | 1.438 | MS16174-125B |
| | -0031 | 1.200 | 1.752 | 1.375 | .687 | 1.438 | MS16174-125 |
| | -0032 | 1.244 | 1.752 | 1.375 | .687 | 1.438 | MS16174-125C |
| | -0033 | 1.305 | 1.752 | 1.375 | .687 | 1.438 | MS16174-126 |
| | -0034 | 1.350 | 1.752 | 1.375 | .687 | 1.438 | MS16174-126A |
| | -0035 | 1.390 | 1.752 | 1.375 | .687 | 1.438 | MS16174-127 |
| | -0036 | 1.458 | 1.939 | 1.500 | .750 | 1.625 | MS16174-129A |
| 7 | -0037 | 1.500 | 1.939 | 1.500 | .750 | 1.625 | MS16174-129 |
| | -0038 | 1.566 | 1.939 | 1.500 | .750 | 1.625 | MS16174-130 |

See footnotes at end of table.

E TABLE I. Size selection. - Continued

| E Tube size | Military part number | Dimensions ^{1/2/} | | | | | Superseded part number |
|-------------|----------------------|----------------------------|-------|-------|-------|-------|------------------------|
| | | A DIA | B DIA | C | D | E | |
| 8 | M19622/13-0039 | 1.641 | 2.314 | 1.750 | 0.875 | 1.875 | MS16174-132 |
| | -0040 | 1.688 | 2.314 | 1.750 | .875 | 1.875 | MS16174-132A |
| | -0041 | 1.735 | 2.314 | 1.750 | .875 | 1.875 | MS16174-132B |
| | -0042 | 1.812 | 2.314 | 1.750 | .875 | 1.875 | MS16174-133 |
| | -0043 | 1.859 | 2.314 | 1.750 | .875 | 1.875 | MS16174-133A |
| | -0044 | 1.906 | 2.314 | 1.750 | .875 | 1.875 | MS16174-133B |
| | -0045 | 2.046 | 3.255 | 2.000 | .937 | 1.875 | MS16174-133B |
| 9 | -0046 | 2.093 | 3.255 | 2.000 | .937 | 2.125 | MS16174-134A |
| | -0047 | 2.140 | 3.255 | 2.000 | .937 | 2.125 | MS16174-134B |
| | -0048 | 2.285 | 3.255 | 2.000 | .937 | 2.125 | MS16174-135 |
| | -0049 | 2.364 | 3.255 | 2.000 | .937 | 2.125 | MS16174-136 |
| | -0050 | 2.418 | 3.255 | 2.000 | .937 | 2.125 | MS16174-137 |
| | -0051 | 2.540 | 3.255 | 2.000 | .937 | 2.125 | MS16174-137A |
| | -0052 | 2.700 | 3.255 | 2.000 | .937 | 2.125 | MS16174-138 |

- E 1/ Dimensions are in inches.
2/ Dimensional tolerances shall be as follows:

| Size | Fixed (plus or minus)* | Closure** |
|-------------|------------------------|-----------|
| 0-0.499 | 0.010 | 0.015 |
| 0.500- .999 | .010 | .018 |
| 1.000-1.999 | .015 | .020 |
| 2.000-2.999 | .020 | .025 |
| 3.000-3.999 | .025 | .030 |

* Fixed dimension tolerances apply individually to each fixed dimension by its own size.

** Closure dimension tolerances are determined by the largest closure dimension and this single tolerance is used for all other closure dimensions

3/ For replacement in existing installations. Not to be used for new construction.

Requirement:

Marking. Tube size in 1/8 inch high raised letters molded on face or may be stamped with ink type solution of contrasting color.

Preparing activity:

Navy - SH

(Project 5975-N612-13)

